

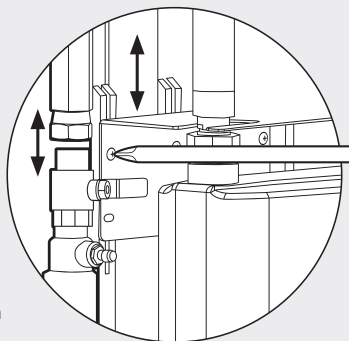
Installation Tips

If the ECV and regulator connections are too far apart or too close you can adjust the height of the internal assembly.

Using Philips screwdriver remove the 3 screws that hold the meter bracket. Then adjust the position to the required height and secure the meter bracket again using the same screws.

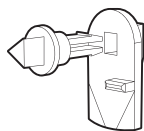
Costal Areas

All metal components of the meter box are manufactured from high quality materials and protected from corrosion. However in costal areas where the environment especially aggressive, we recommend spaying all metal components with Rocol® "Z30" or "Heavy Duty Rustshield" spray, or another suitable alternative.

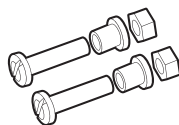


Spare Parts

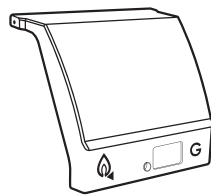
Please see spare part for the Meter box.
For internal spares please contact: sales@clesse.co.uk



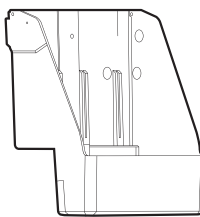
Lock
UUMB-LOCK



Hinges
UUMB-HINGE

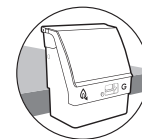


Lid
UUMBLXXX*

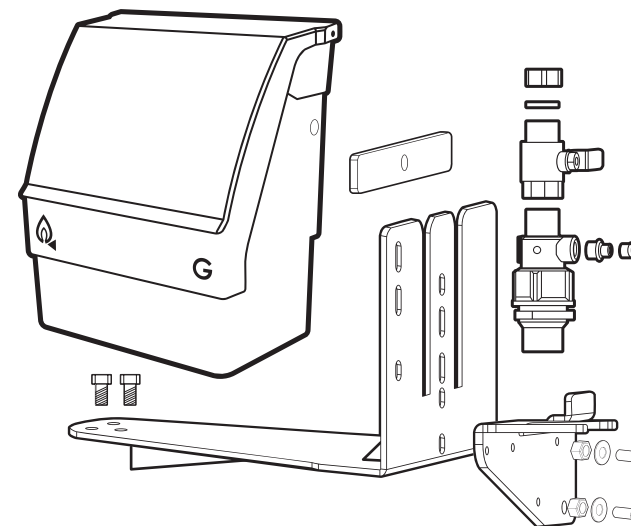


Box Base
UUMBBXXX*

* Please advise colour and version when placing your order.



EDGE OF BASE MOUNTING 300MM ADJUSTABLE HEIGHT KIT INSTRUCTIONS



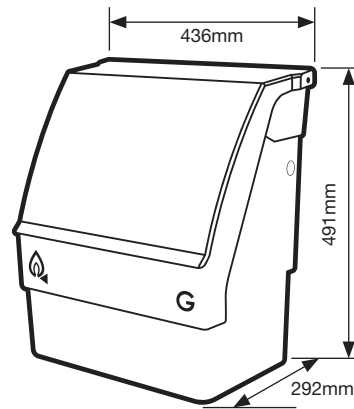
Adjustable height extended mounting bracket



Meter Box Location *(MP installations only)*

When locating the meter box on the wall or as semi concealed against the building, please ensure that the minimum recommended clearances as per the table below adhere to:

Semi concealed meter box to opening	A	1000mm
Other types of meter housing to opening	B	180mm
Meter housing to electrical equipment	C	330mm
Vent to opening	D	570mm
Vent to electrical equipment	E	850mm



- A** Distance from the meter box to any un-trapped drain, gully, balanced flue terminal or low level opening into the building such as doors or air bricks which are sited below 250mm from ground level.
- B** Distance from the housing to any opening into a building i.e. opening windows, doors, air bricks, and balanced flue terminals.
- C** Distance from the housing to any electrical equipment.
- D** Distance from vent discharge point to any opening into the property or un-trapped drain or gully.
- E** Distance of vent discharge point to any electrical equipment.

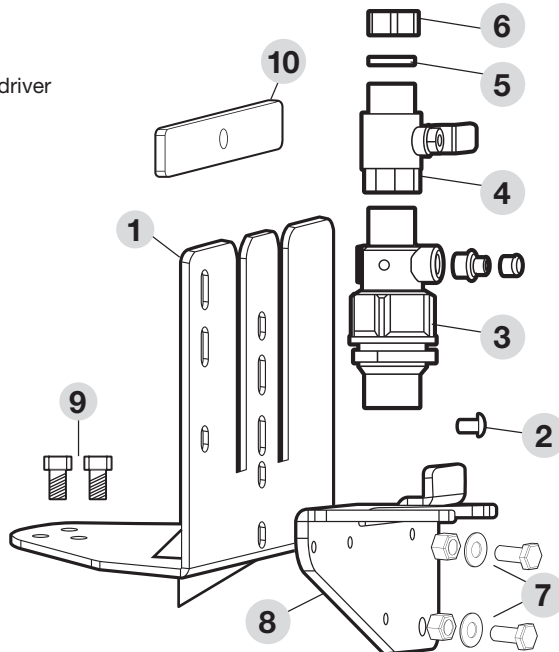
Component List

Tools Required

- Drill with masonry drill bit • Philips Screwdriver
- 2 Adjustable spanners • Allen key –6mm

List of components:

No	Description	Qty
1	Extended Edge of Base bracket	1
2	M8 security bolt with washer and nut	1
3	PE Transition fitting with security clip	1
4	ECV valve	1
5	Sealing washer / gasket	1
6	Blanking cap	1
7	M10 Bolts and Nuts	2
8	PE transition bracket	1
9	Raw Bolts (not supplied)	0
10	Reinforcement Bracket	1



Installation Guide

Bracket installation

- 1** Using suitable drill bit mount the bracket to the base. Ensure the bottom vertical fin is fully touching the side of the concrete base. Use M10 Anchor Bolts / RawlBolts (Not supplied) to secure bracket.
- 2** 2" Above ground
1/2" Above ground
Ground level
Semi concealed
- This Bracket is suitable for multi positional installation of the meter box. There are four slots on the side of the bracket that allow you to select the right height of the meter box.
- This bracket will space the meter box 300mm away from the base to accommodate different caravan sizes

- 3** Ensure the PE transition bracket is located at the required position (as per the image) and secure both brackets together using provided M10 bolts and nuts.
- 4** Install Primofit and ECV. Ensure the sealing cap with washer is fitted.

Box installation

- 1** Remove the sealing Cap and ECV handle. Slide the Meter box on to the bracket and connect ECV to the regulator.
- 2** Secure the meter box to the bracket using provided M8 bolt and nut.
- 3** Install the ECV handle and tighten the ECV and Regulator connection. Then test accordingly.

Final connection, testing and purging should be done by qualified gas safe engineer.